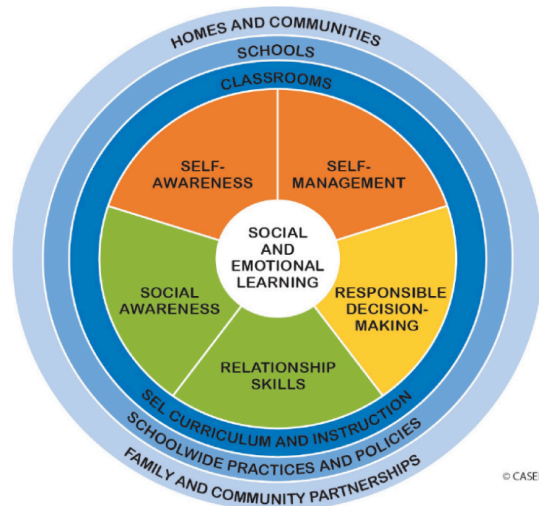


**Please Join Us
Social Emotional Learning (SEL)
Parent Information Session
2/6/19**

**5:30 Welcome
5:45 Presentation
6:45 Q & A
7:00 PTC Meeting**



Social and emotional learning (SEL) is the process through which children and adults acquire and effectively apply the knowledge, attitudes, and skills necessary to understand and manage emotions, set and achieve positive goals, feel and show empathy for others, establish and maintain positive relationships, and make responsible decisions.